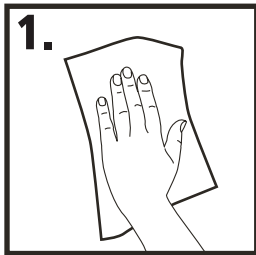


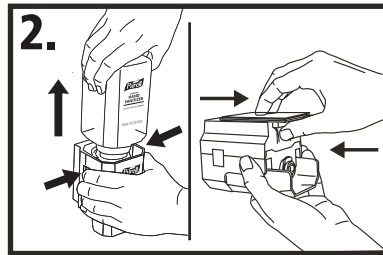
PURELL® ES1 Dispenser Installation Instructions



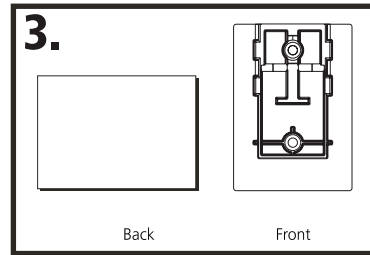
Wall-Mount Instructions



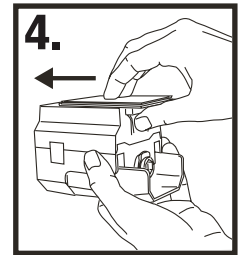
1. Clean surface with isopropyl alcohol. **Do not use household cleaners**



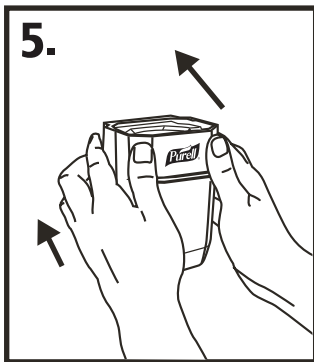
2. Remove refill by depressing right and left release buttons. Remove mount plate by depressing release lever behind push bar and sliding mount plate. Set refill and base aside



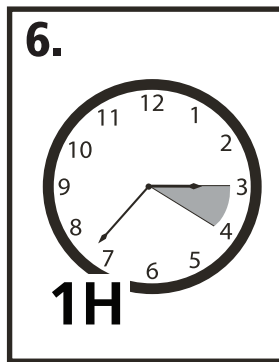
3. Remove the protective paper from the double-sided tape and press firmly on the mount plate



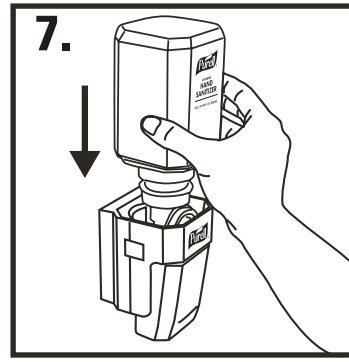
4. Slide Mounting Plate onto base



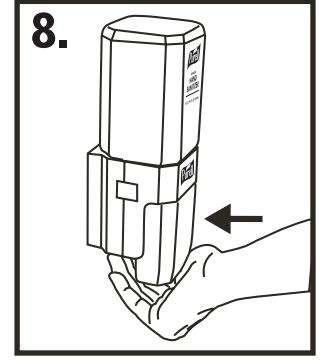
5. Remove the other protective paper from the double-sided tape and place base on surface



6. Allow the base to set for 1 hour



7. Slide refill into base until refill locks in place



8. Depress push bar several times until product is dispensed



Dispenser Adapter and Conversion Instructions

Video instructions available at www.gojo.com/ES1 or scan QRC Code



STOP

Check your refill. These instructions are only applicable for NEW refills (left), when replacing an OLD refill (right)

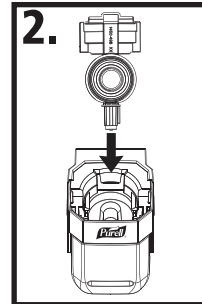
NEW



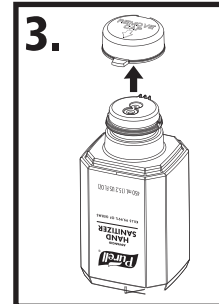
OLD



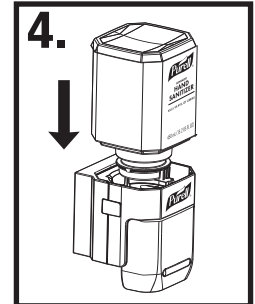
1. Push right and left release buttons simultaneously. Remove OLD refill



2. Insert adapter into dispensing base. You will feel a click when it is correctly in place



3. Remove cap on NEW refill



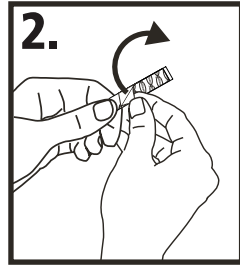
4. Slide refill into dispensing base. Refill will lock into place



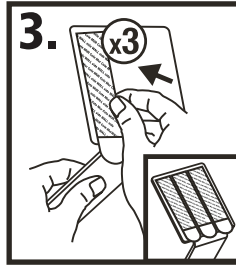
Surface-Mount Instructions



1. Clean surface before adhering mount solution to the horizontal surface



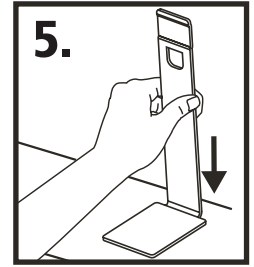
2. Peel the paper from red Command side of the first strip



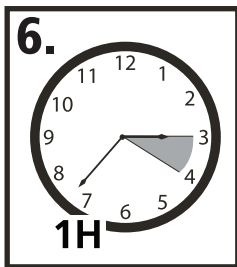
3. One at a time, adhere the Command strips to the bottom of the surface mount, leaving the entire rounded and non-adhesive edge extending beyond the edge of the metal mount. This will allow for easy removal if necessary. Repeat this 2 times for the remaining Command strips



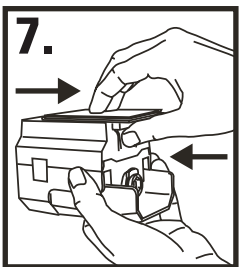
4. Peel the protective paper from the wall side of each command strip



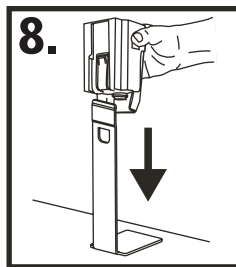
5. Place the mount against the surface in the desired location and firmly press



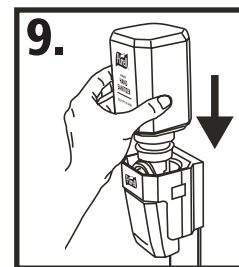
6. Allow the command strips to set for 1 hour before loading base and refill



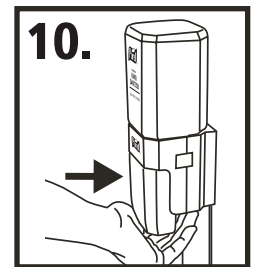
7. Press the release lever located on the bottom of the base; slide off the wall plate



8. Slide base onto the surface mount, making sure there is an audible click when the base is in place



9. Load refill into the base with the PURELL label facing out making sure there is an audible click when the refill is in place



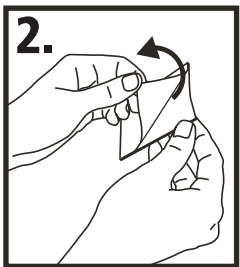
10. Pump the push bar on the base until fully primed and PURELL Advanced Instant Hand Sanitizer is dispensed



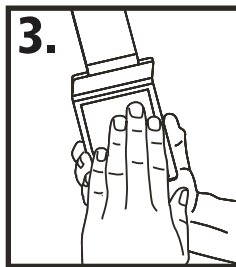
Rail-Mount Instructions



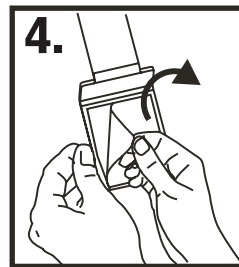
1. Clean surface before adhering mount solution to the horizontal surface



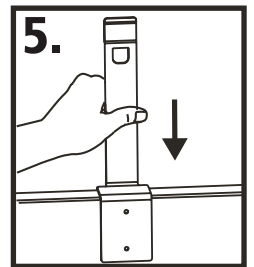
2. Peel the protective paper off of the double sided tape



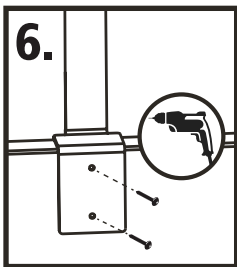
3. Adhere to the inside of the vertical face of the rail mount



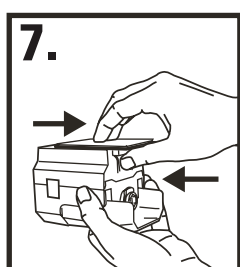
4. Peel the protective paper from the other side of double sided tape



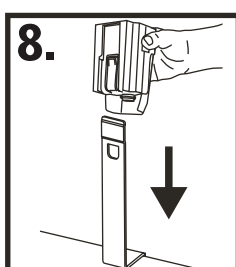
5. Place the mount against the surface in the desired location and firmly press



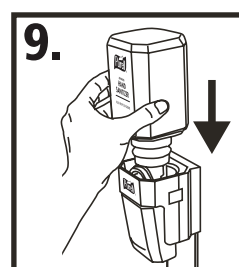
6. Use the provided self-tapping screws and a drill to secure rail mount into the vertical surface



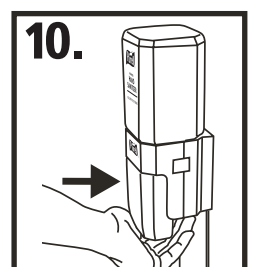
7. Press the release lever located in the bottom of the base and slide off the wall plate



8. Slide base onto the rail mount, making sure there is an audible click when the base is in place



9. Load refill into the base with the PURELL label facing out, making sure there is an audible click when the refill is in place



10. Pump the push bar on the base until fully primed and PURELL Advanced Instant Hand Sanitizer is dispensed



GOJO Industries, Inc.
One GOJO Plaza, Suite 500
P.O. Box 991 • Akron, OH 44309-0991
Tel: 1-330-255-6000 • Toll-free: 1-800-321-9647
Fax: 1-800-FAX-GOJO